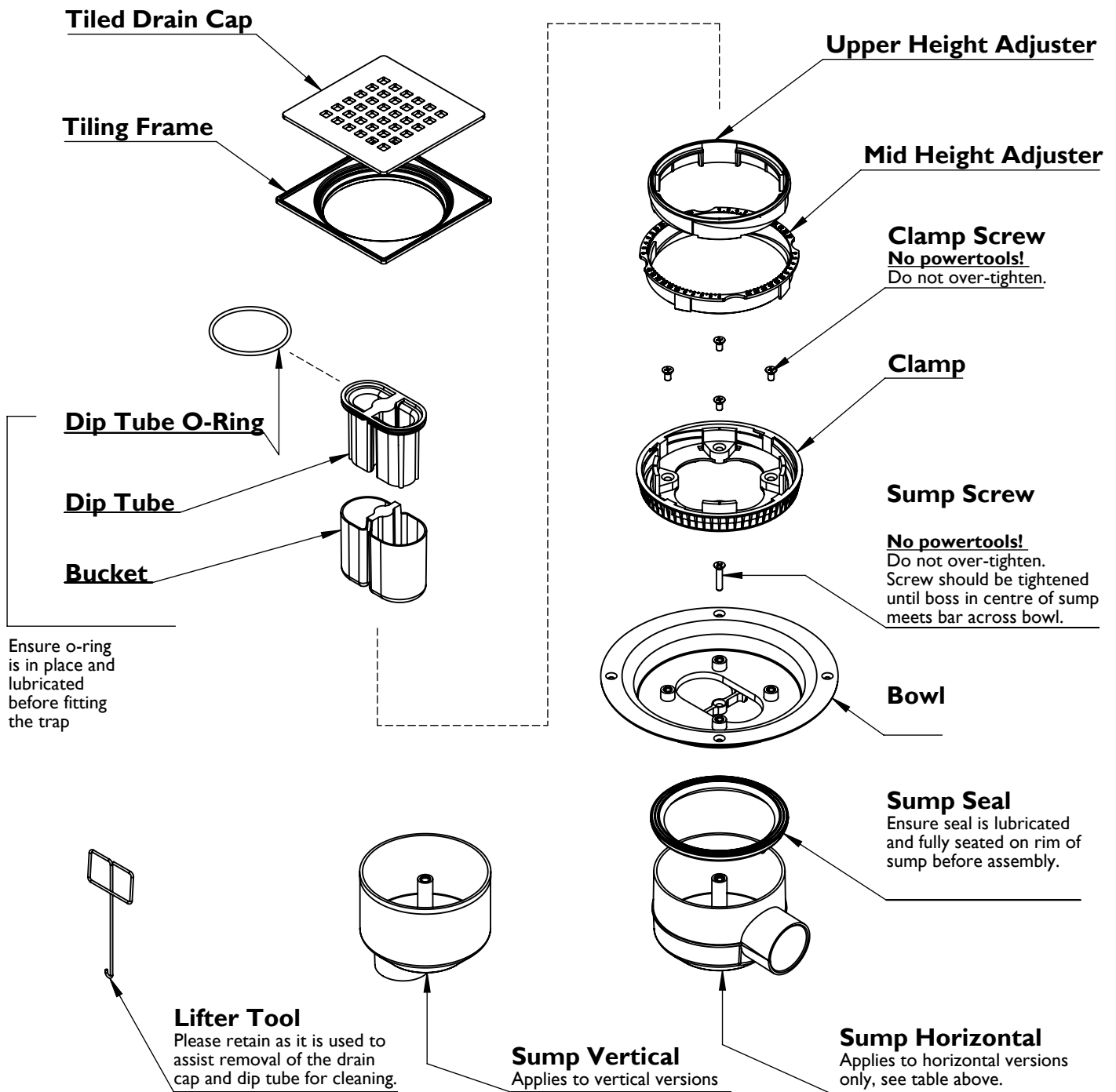


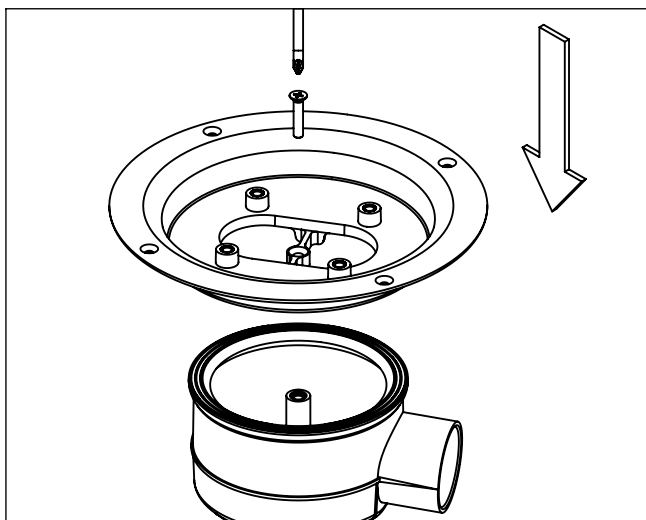
Tiled Gulley Drain Assembly Guide

This guide applies to the following versions of the Gulley drain

<p>Tiled floor gulley - Horizontal outlet Contract Version</p> <p>Part no. UTCD01/H</p>	<p>Tiled floor gulley - Vertical outlet Contract Version</p> <p>Part no. UTCD01/V</p>
---	---

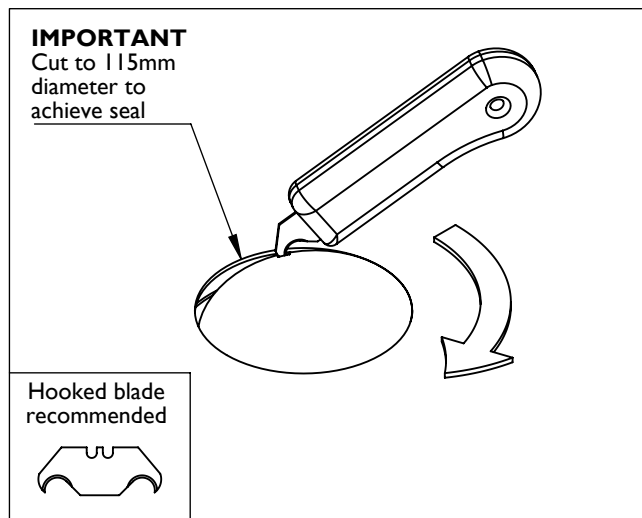


Installation details



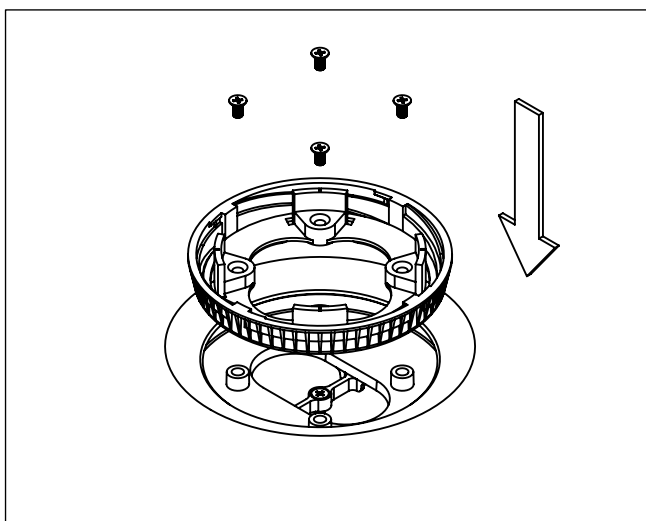
Fitting the sump

Ensure the seal is positioned on the rim of the sump and fully pushed into place. Align the bowl and sump, then fit the 25mm screw through the bowl cross bar. Tighten the screw by hand until the cross bar meets with the boss in the centre of the sump. **DO NOT OVER-TIGHTEN**



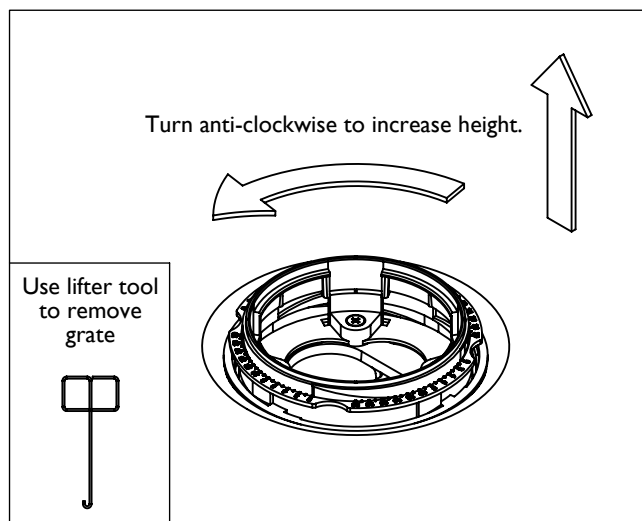
Cutting the membrane

After the membrane is layed, find the centre of the drain and cut a circular hole to 115mm diameter (central to the bowl). Care should be taken not to damage the drain when cutting the hole.



Installing the clamp

After the membrane is cut, the clamp can be gently pressed into place. Ensure the clamp is fully down before hand tightening the four clamp screws evenly.



Adjusting the tiling grate

The drain grating is height adjustable to accommodate different tile thicknesses. This is achieved by fitting the two adjusting rings and then turning the mid ring (with numbers on).

Ensure the top edge of the grating matches the finished height of your tiles -including adhesive, then glue the rings in place with ABS suitable solvent cement.

Safety

Please read these installation instructions carefully before proceeding.
Keep guide for future reference.

Incorrect installation will invalidate the guarantee.

Make sure there are no hidden pipes or cables in the floor or walls where you intend to drill.

Wear safety goggles, shoes and appropriate clothing.